

CAREFREE NETWORKING

**HFS16T****(16) 10/100M Auto-negotiation,
Auto-MDI/MDIX Ports****19" 1U Rack Mount****Two Year Warranty****PACKAGE CONTENTS:**

- ◆ One HFS16T 16-Port 10/100M Rack Mount Switch
- ◆ Four Rubber Feet with Adhesive Backing
- ◆ 19" Rack Mount Kit
- ◆ One Power Cord
- ◆ One User's Manual

**Fast and Easy Networking**

The Hawking HFS16T is an ideal solution for workgroup and enterprise users, and is designed for easy installation, high performance, and seamless migration between 10Base-T and 100Base-TX network speeds. The switch includes (16) 10/100M auto-negotiation, auto-MDI/MDIX ports and provides a flexible, reliable, and affordable solution for an Ethernet network. Each port delivers up to 200Mbps throughput, which can give workstations a congestion-free data pipe for simultaneous access to the server. The switch can operate in either half or full-duplex modes, and store-and-forward architecture filters eliminate error packets and improve efficiency. In addition, the HFS16T can be expanded by cascading two or more switches together. And the built-in universal power supply lets you easily install the switch without an external power adapter.

Features

- ◆ (16) 10/100M auto-negotiation, auto-MDI/MDIX Ethernet ports
- ◆ Complies with IEEE 802.3 10Base-T and IEEE 802.3u 100Base-TX standards
- ◆ Supports store-and-forward architecture and performs forwarding and filtering at non-blocking full wire-speed
- ◆ Supports "Link/Activity" LED modes with "Power" (on) auto diagnostic
- ◆ Supports IEEE 802.3x flow control for full duplex operation
- ◆ Supports back pressure for half duplex operation
- ◆ Built-in 12K x 64 SRAM
- ◆ Supports packet lengths of up to 1522 bytes
- ◆ Supports 2K MAC address entries
- ◆ Supports aging function (300 seconds)
- ◆ Broadcast Storming filter function
- ◆ Built-in universal power supply (100-240V AC)
- ◆ EMI certifications: FCC Class A, CE Mark

Network Requirements:

- ◆ IEEE 802.3 10Base-T, or 802.3u 100Base-TX Ethernet

16-Port 10/100M Rack Mount Switch

CONNECT WHEREVER YOU WANT · WHENEVER YOU WANT

CAREFREE NETWORKING



HFS16T

**(16) 10/100M Auto-negotiation,
Auto-MDI/MDIX Ports**
19" 1U Rack Mount
Two Year Warranty

SPECIFICATIONS

Network Specifications

- IEEE 802.3 10Base-T Ethernet, IEEE 802.3u 100Base-TX Fast Ethernet, IEEE 802.3x Flow Control

Ports

- (16) 10/100M Auto-negotiation, Auto-MDI/MDIX ports

LED Indicators

- Power Indicator
- 16 Link/Activity Indicators

Flow Control

- Full Duplex: IEEE 802.3x
- Half Duplex: Back Pressure

Switching Scheme

- Store-and-forward

Cabling Type

- UTP Category 3 or better (10Base-T)
- UTP Category 5 or better (100Base-TX)

MAC Addresses

- Supports 2K MAC addresses

Protocols

- CSMA/CD

Physical Dimensions

- 10.75" x 6.30" x 1.75" (W x D x H)
- 273mm x 161mm x 44mm (W x D x H)

Input Power Specifications

- AC 90-264V, 50-60Hz

Power Consumption

- 6.3W (max.)

Operating Temperature

- 0-40°C

Operating Humidity

- 5% - 90%, non-condensing

EMI Conformance

- FCC Class A
- CE Mark

HAWKING TECHNOLOGIES, INC

USA: Irvine, California

Website: www.hawkingtech.com

Email: sales@hawkingtech.com

Tel: 888.662.8828, 949.580.0888

Fax: 949.580.0880

Europe: Rotterdam, The Netherlands

Website: www.hawkingeurope.com

Email: sales@hawkingeurope.com

Tel: 31.10.245.1600

Fax: 31.10.245.1616

READY, NETWORK & GO!

Step 1 - Power On the Switch

Power on the switch by connecting the power cord.

Step 2 - Connect Computers, Servers, etc.

Connect computers, servers, or other appropriate devices to the switch's Ethernet ports.

Step 3 - Get Started

Power on the attached computers, servers, etc. and you're ready to go!

ORDERING INFORMATION:

H-GS5T 5-Port 10/100/1000M Gigabit Switch

H-GS8T 8-Port 10/100/1000M Gigabit Switch

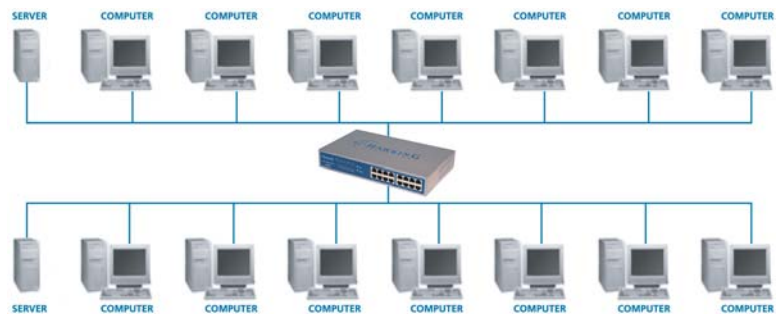
HFS16T 16-Port 10/100M Rack Mount Switch

HFS24T 24-Port 10/100M Rack Mount Switch

HGMS224 24-Port 10/100M Layer 2 Managed Switch (Intelligent)

PS12U 2 USB + 1 Parallel Port Internet Print Server

WIRED NETWORK DIAGRAM:



Product Features

16 full-duplex copper 10/100M ports with standard RJ-45 connectors
Plug in standard Ethernet cables to the HFS16T's RJ-45 ports.

10/100Mbps auto-sensing
The HFS16T will detect your network speed setting to give you the best possible network performance.

Auto-MDI/MDIX technology
Enables the use of either standard Ethernet cables or crossover cables to connect with other devices.

Store-and-forward architecture
Store-and-forward architecture filters eliminate error packets and improve efficiency.

Cascading
The switch can be expanded by cascading two or more switches together; from any port and to any number of switches.

Built-in universal power supply
Allows for easy installation of the switch without an external power adapter.

All ports capable of speed & duplex negotiation
Each port on the HFS16T can detect the speed and duplex of the attached network connection.